



## CONTENTS:

1. New Products
2. Product Update
3. Shows & Exhibits

## Contact OpTest Service regarding Preventative Maintenance:

Phone: 00 1 613-632-5169  
Fax: 00 1 613-632-3744  
E-mail: [service@optest.com](mailto:service@optest.com)

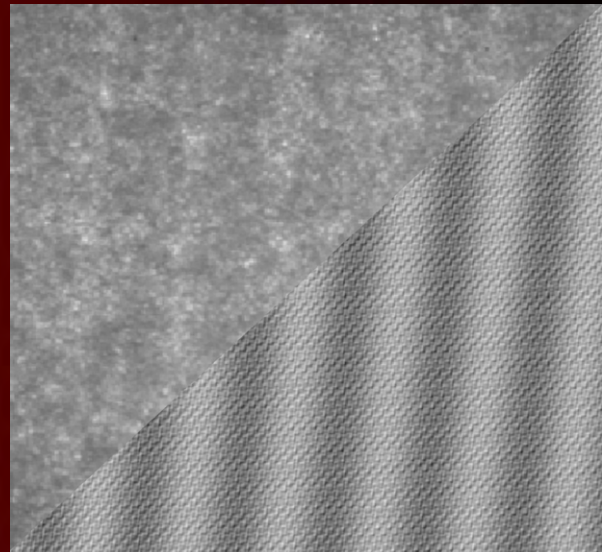
## NEW OPTEST PRODUCTS

**OpTiPro** (Optical Pattern Recognition) software quantifies the intensity, size and orientation of periodic and quasi-periodic patterns in paper. The **OpTiPro** has superior precision, speed and sensitivity when used in conjunction with the Paper PerFect Formation Analyzer or the Paprican Micro-Scanner optical platforms.

## PRODUCT UPDATES

The **OpTiSurf** will be exhibited at Japan Tappi in Takusmatu, Exfor 2008 in Montreal and at the Tappi Papermakers Conference in Dallas (see Shows & Exhibits). The **OpTiSurf** determines the **surface roughness** of a sheet optically. This correlates with air leak methods but offers greater precision and speed. Surface roughness can be measured on grades, such as tissue papers, that cannot be measured by traditional air leak methods. Optional software provides information on the component size of the measured roughness. Contact OpTest for more information.

The **Intelligent Drainage Analyzer (IDA)** provides fast, precise, on-line testing of pulp drainage. The **IDA** features: Intelligent sampling, cleaning and equipment diagnostics routines. On-line monitoring and user selected frequency of automatic calibration via network browsers. Self monitoring of screen cleanliness which significantly reduces scheduled maintenance. Real time operating system and fixed analysis intervals of under one minute greatly enhances process control and optimization.



Lower right contains an image of an OpTiPro analysis of the patterns in newsprint

## SHOWS & EXHIBITS

The following is a list of exhibits where the latest OpTest technology will be shown:

- **JTappi**, Takamatsu, Oct 10-12 (Nomura Shoji)
- **ATIP '07**, Grenoble, France, Oct 16-18, booth #422
- **Exfor 2008**, Montreal, Feb. 5-7, booth #1910
- **AsianPaper '08**, Bangkok, Apr 23-25 (Chemical House)
- **Tappi Papermaker & PIMA '08**, Dallas, May 5-7
- **SPCI '08**, Stockholm, May 27-29 (PTE ab)
- **Zellcheming '08**, Wiesbaden, Germany, June 23 - 26

Come meet us and try the latest equipment.